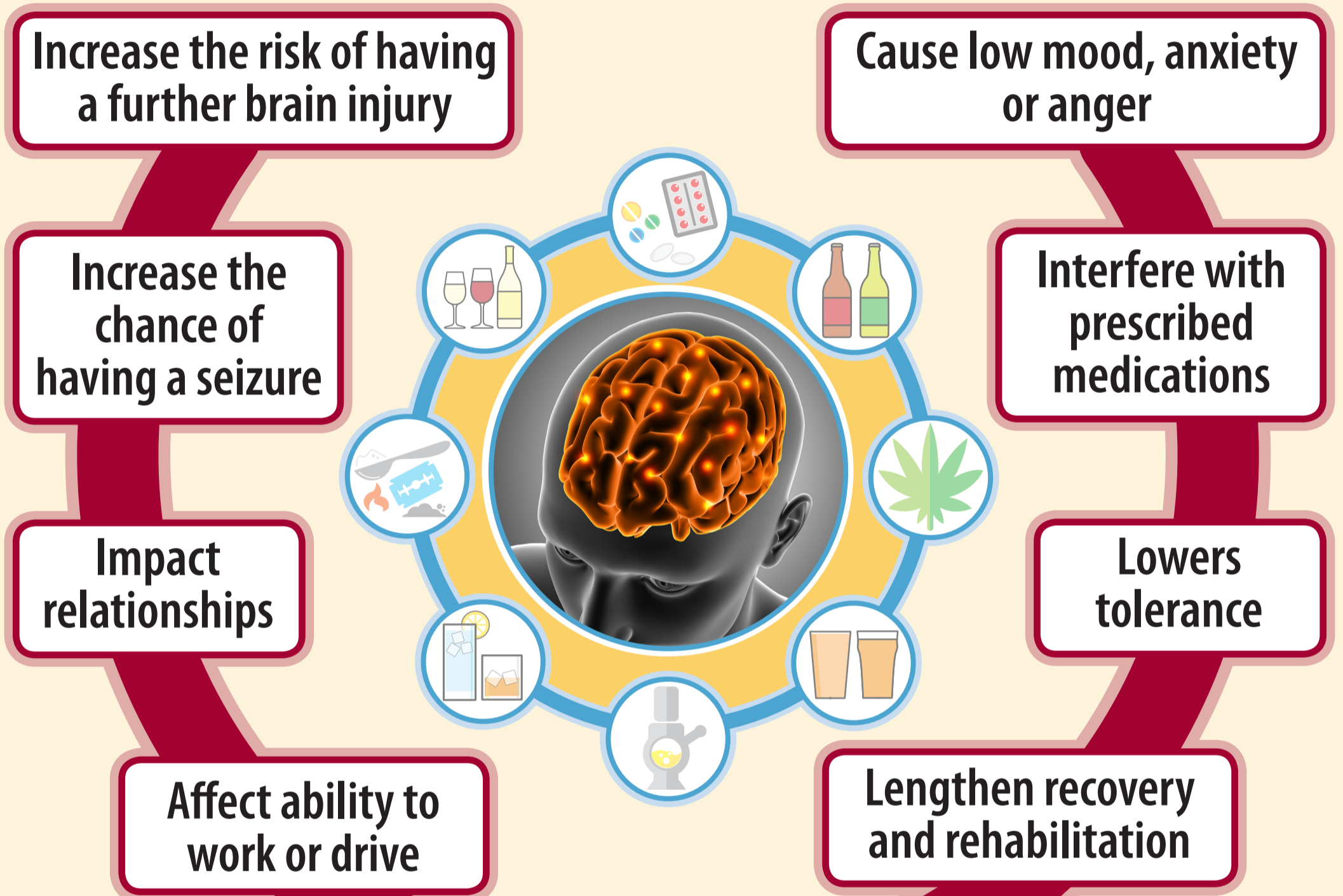


# Alcohol and Drug Misuse After a Brain Injury

## May cause the following problems:



**Make symptoms of brain injury worse for example:**

- Affect judgement and reasoning, which can lead to risk taking
- Slow down reactions
- Alter sense of balance and co-ordination, and increase risk of falling
- Impair vision, hearing and speaking
- Cause drowsiness and lower energy levels
- Affect concentration, memory, thinking skills and decision making

Drug images: vecteezy.com / Centre image: freepik.com

Image Designed by kjpargeter / Freepik

**If you would like additional support and advice, talk to a healthcare professional**

