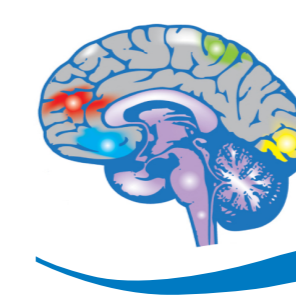


Areas of the Brain and their Function



NHS

Greater Manchester
Neuro-Rehabilitation Network

Frontal Lobe

- Concentration
- Planning
- Judgement
- Emotion
- Creativity
- Personality
- Inhibition of behaviour
- Speaking
- Movement
- Problem solving

Parietal Lobe

- Movement
- Spatial awareness
- Sense of touch

Occipital Lobe

- Vision
- Image recognition
- Visual processing

Cerebellum

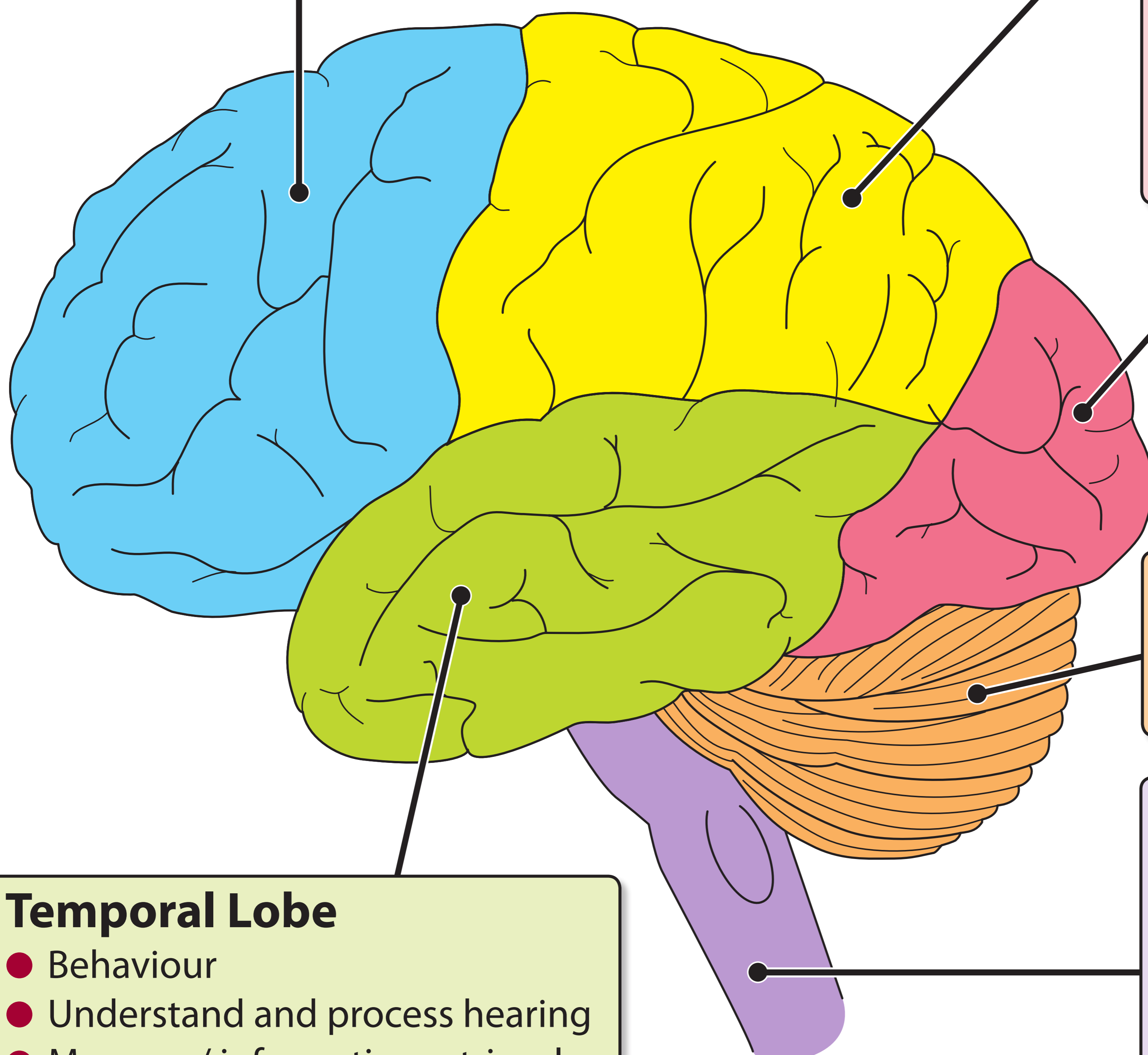
- Balance
- Co-ordination

Brain Stem

- Swallowing
- Breathing
- Digestion
- Heart control
- Sleep cycle
- Levels of alertness

Temporal Lobe

- Behaviour
- Understand and process hearing
- Memory / information retrieval
- Understanding language



Please note this is a simplified version of the function of the brain and overlap can occur between different areas. In some instances multiple areas of the brain can be affected.